

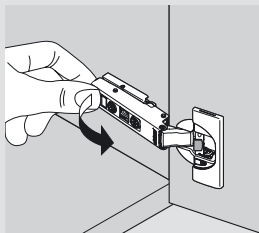
CLIP top BLUMOTION — Angle restriction clip

Assembly instructions

Blum P/N 70T3553

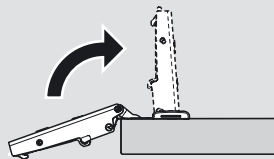
Step 1 — Remove door

Remove hinge from CLIP mounting plate.



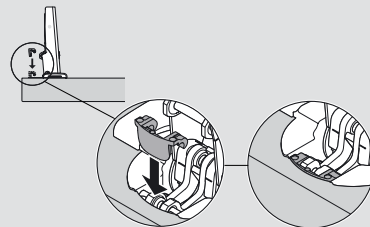
Step 2 — Rotate hinge arm

Rotate hinge arm to closed position.



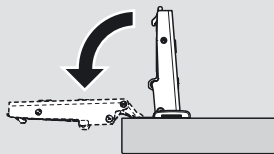
Step 3 — Insert angle restriction clip

Insert angle restriction clip (70T3553) into base of hinge arm and secure.



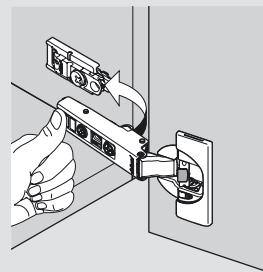
Step 4 — Rotate hinge arm

Rotate hinge arm to open position.



Step 5 — Reattach door

Align door and reattach to CLIP mounting plate.



NOTE: For use with CLIP top BLUMOTION 110° and 110°+ hinges only

Subject to technical modifications without notice. © 2011

LIT.HNG5201.01.11

 **blum**[®]